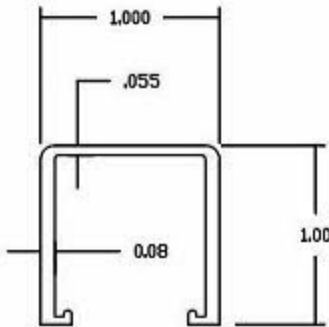


SHILO ALUMINUM FENCE  
WWW.FENCE-STORE.COM

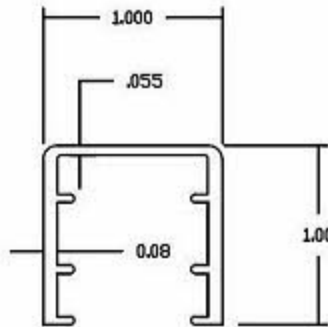
# Shilo Aluminum

WEIGHT PER FOOT 0,258



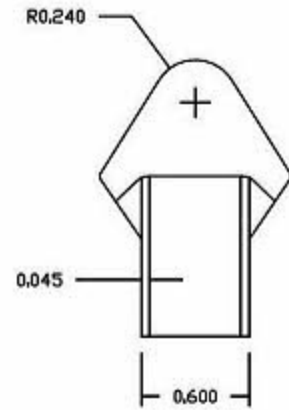
RESIDENTIAL STRINGER RAIL

WEIGHT PER FOOT 0,274



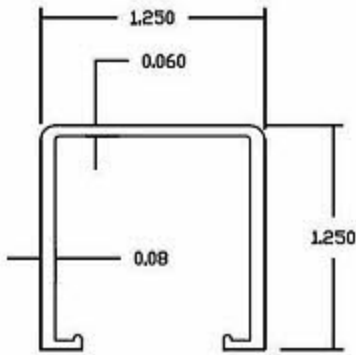
RESIDENTIAL HEADER RAIL

WEIGHT PER FOOT 0,119



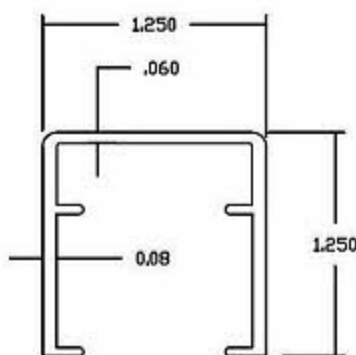
RESIDENTIAL PICKET

WEIGHT PER FOOT 0,336



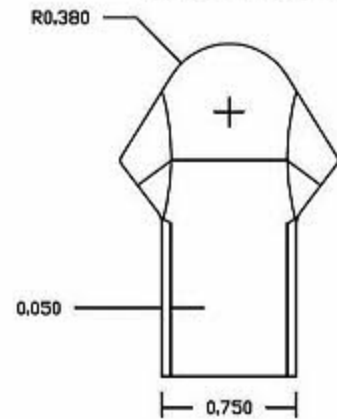
COMMERCIAL STRINGER RAIL

WEIGHT PER FOOT 0,350



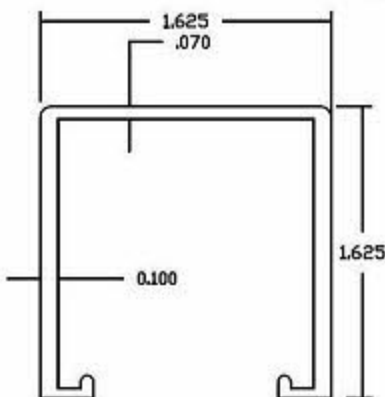
COMMERCIAL HEADER RAIL

WEIGHT PER FOOT 0,168



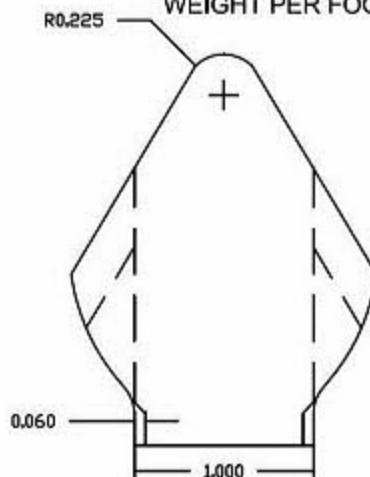
COMMERCIAL PICKET

WEIGHT PER FOOT 0,545



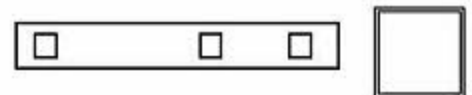
INDUSTRIAL HEADER AND STRINGER

WEIGHT PER FOOT 0,270



INDUSTRIAL PICKET

## POST OPTIONS



- 2" X 2" 0.062 WALL WT./FT. 0.558
- 2" X 2" 0.080 WALL WT./FT. 0.737
- 2" X 2" 0.125 WALL WT./FT. 1.128
- 2 1/2" X 2 1/2" 0.070 WALL WT./FT. 0.817
- 2 1/2" X 2 1/2" 0.100 WALL WT./FT. 1.151
- 3" X 3" 0.125 WALL WT./FT. 1.435
- 4" X 4" 0.125 WALL WT./FT. 1.722
- 6" X 6" 0.125 WALL WT./FT. 2.324